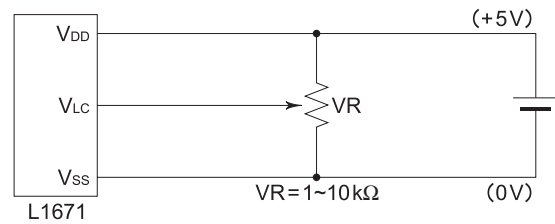
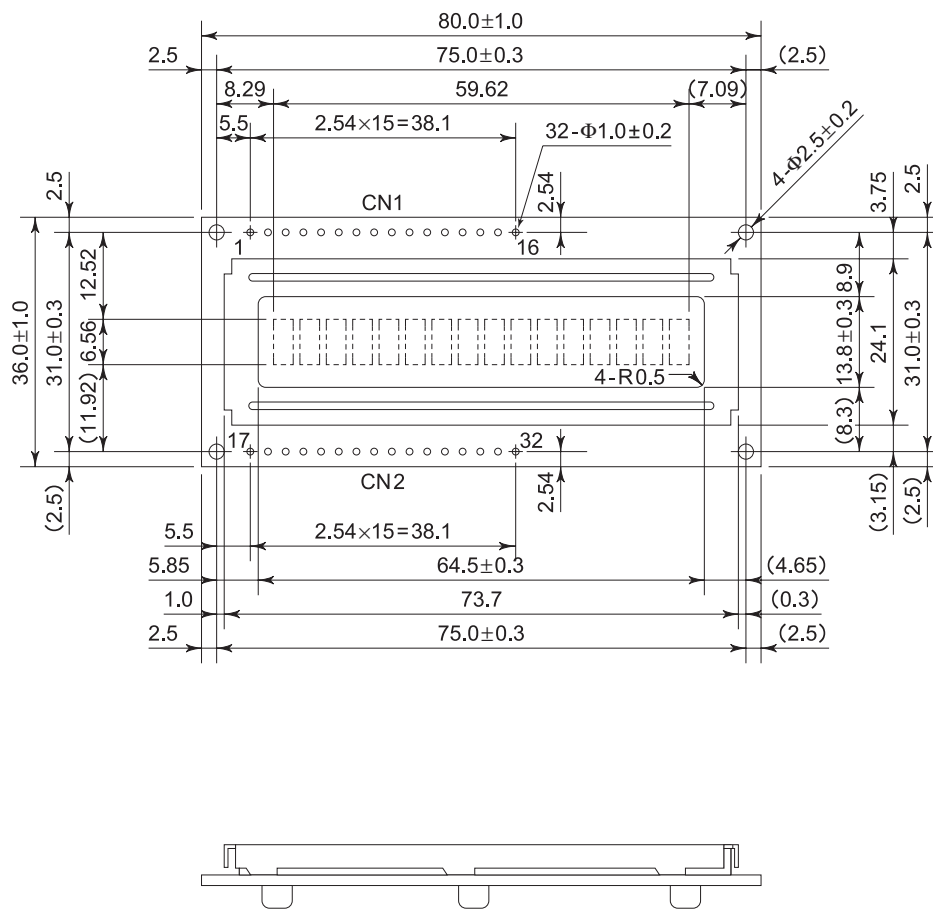
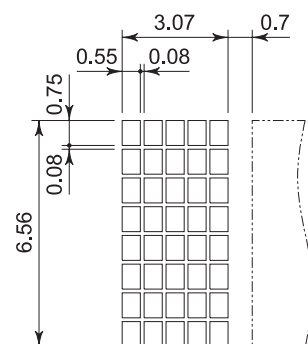
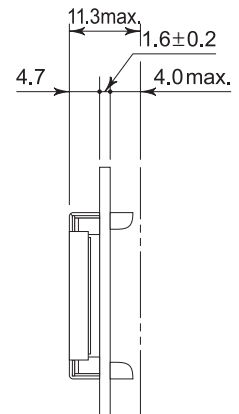


■ TN/STN Reflective type

Item	L1671000000	L167100J000
Mechanical Characteristics	A	A
Absolute Maximum Ratings	B	B
Electrical Characteristics	C	C
Optical Characteristics	D-1	D-2-1
Recommended Operating Voltage	E-1	E-2

F-1 Power Supply**F-2 Dimensions**

Unit : mm
General tolerance : ±0.5

**F-3 Pin Functions**

No.	No.	Name	Function
1	17	V _{SS}	GND
2	18	V _{DD}	Power supply voltage +5V
3	19	V _{LC}	Liquid crystal driving voltage
4	20	RS	L : Instruction code input H : Data input
5	21	R/W	L : Data write (LCM←MPU) H : Data read (LCM→MPU)
6	22	E	Enable
7	23	DB ₀	Data bus line
8	24	DB ₁	Data bus line
9	25	DB ₂	Data bus line
10	26	DB ₃	Data bus line
11	27	DB ₄	Data bus line
12	28	DB ₅	Data bus line
13	29	DB ₆	Data bus line
14	30	DB ₇	Data bus line
15	31	NC	—
16	32	NC	—

F-4 Block Diagram