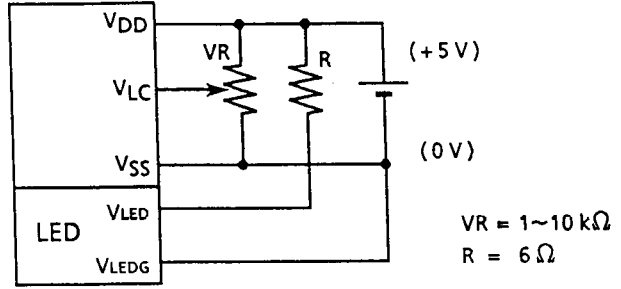


# L2462

## STN Transflective, Built-in LED Backlight type

Item	L2462B1J000
Mechanical Characteristics	A
Absolute Maximum Ratings	B
Electrical Characteristics	C
Optical Characteristics	D-2-2
Recommended Operating Voltage	E-2

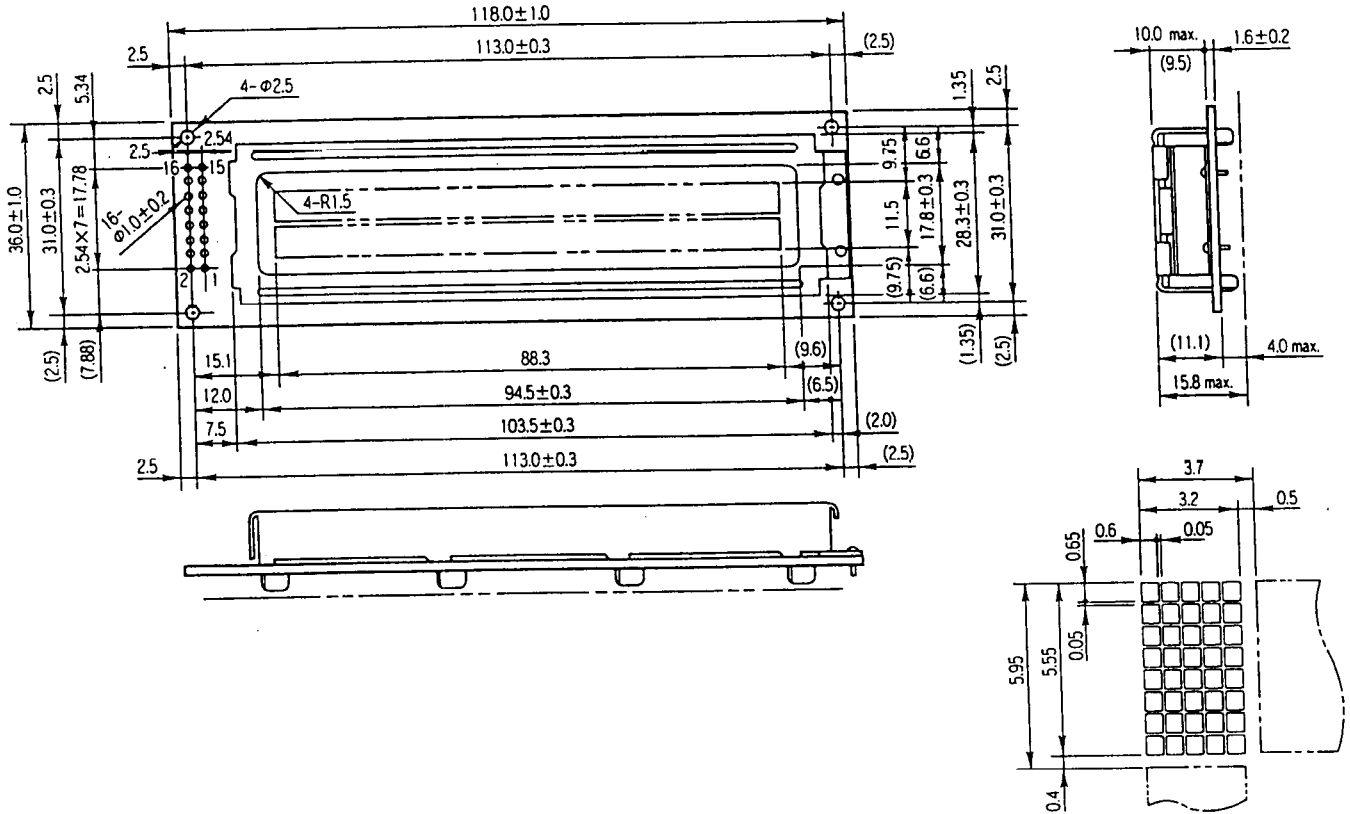
### G-1 Power Supply



### G-2 Dimensions

Unit : mm

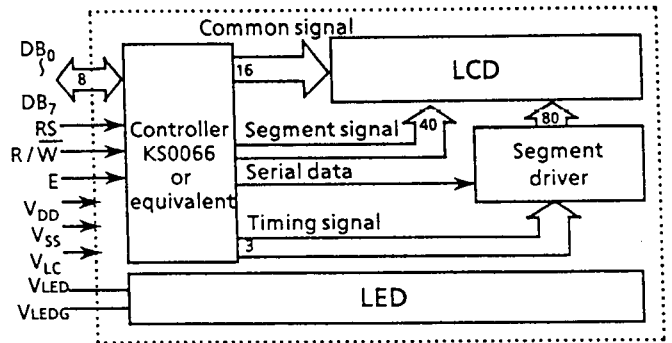
General tolerance : ± 0.5



### G-3 Pin Functions

No.	Name	Function
1	V <sub>SS</sub>	GND
2	V <sub>DD</sub>	Power supply voltage + 5 V
3	V <sub>LC</sub>	Liquid crystal driving voltage
4	RS	L: Instruction code input H: Data input
5	R/W	L: Data write (LCM ← MPU) H: Data read (LCM → MPU)
6	E	Enable
7	DB <sub>0</sub>	Data bus line
8	DB <sub>1</sub>	Data bus line
9	DB <sub>2</sub>	Data bus line
10	DB <sub>3</sub>	Data bus line
11	DB <sub>4</sub>	Data bus line
12	DB <sub>5</sub>	Data bus line
13	DB <sub>6</sub>	Data bus line
14	DB <sub>7</sub>	Data bus line
15	V <sub>LED</sub>	Anode
16	V <sub>LEDG</sub>	Cathode

### G-4 Block Diagram



### G-5 LED Backlight

#### G-5-1 LED Circuit Diagram

